

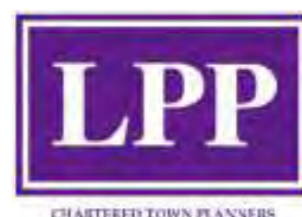
Proposed healthcare facilities including an Urgent Treatment Centre at Clacton Hospital.



Freeland Road Elevation

Image Credit: KLH Architects

Working in collaboration with:



Castons



Welcome to our planning application public consultation

Proposed new healthcare facilities including an Urgent Treatment Centre



East Suffolk and
North Essex
NHS Foundation Trust

We are pleased to share our proposals for an approx. £20 million investment to develop a new facility for healthcare services including urgent treatment on the site of Clacton Hospital.

Our planning application public consultation gives you an opportunity to find out more about the proposals and tell us what you think.

We welcome your views, which will help us to develop our proposals.

Any comments relating to the plans outlined here will be gratefully received.

The team working on the proposals are:



**Lawson Planning
Partnership Ltd (LPP)**

are co-ordinating the preparation & submission of the planning application.



Castons Consulting Ltd

are the project managers, overseeing the project from inception to completion.



KLH Architects

are designing and preparing the proposals.



Clinical need for development

Proposed new healthcare facilities including an Urgent Treatment Centre



East Suffolk and
North Essex
NHS Foundation Trust

Our proposed redevelopment of the Clacton Hospital site provides a major opportunity to improve the health and care facilities that are available to people in the Tendring area.

We know there is significant need for investment in health care. The buildings on site are also in need of updating to provide a modern clinical environment that is fit for the future.

Our plan is to build a new facility that will house healthcare services including an Urgent Treatment Centre (UTC).

East Suffolk and North Essex NHS Foundation Trust (ESNEFT) leases much of the Clacton Hospital site from NHS Property Services Ltd.

These proposals are made on behalf of ESNEFT.



Image: Existing Urgent Treatment Centre

Working in collaboration with:



Castons

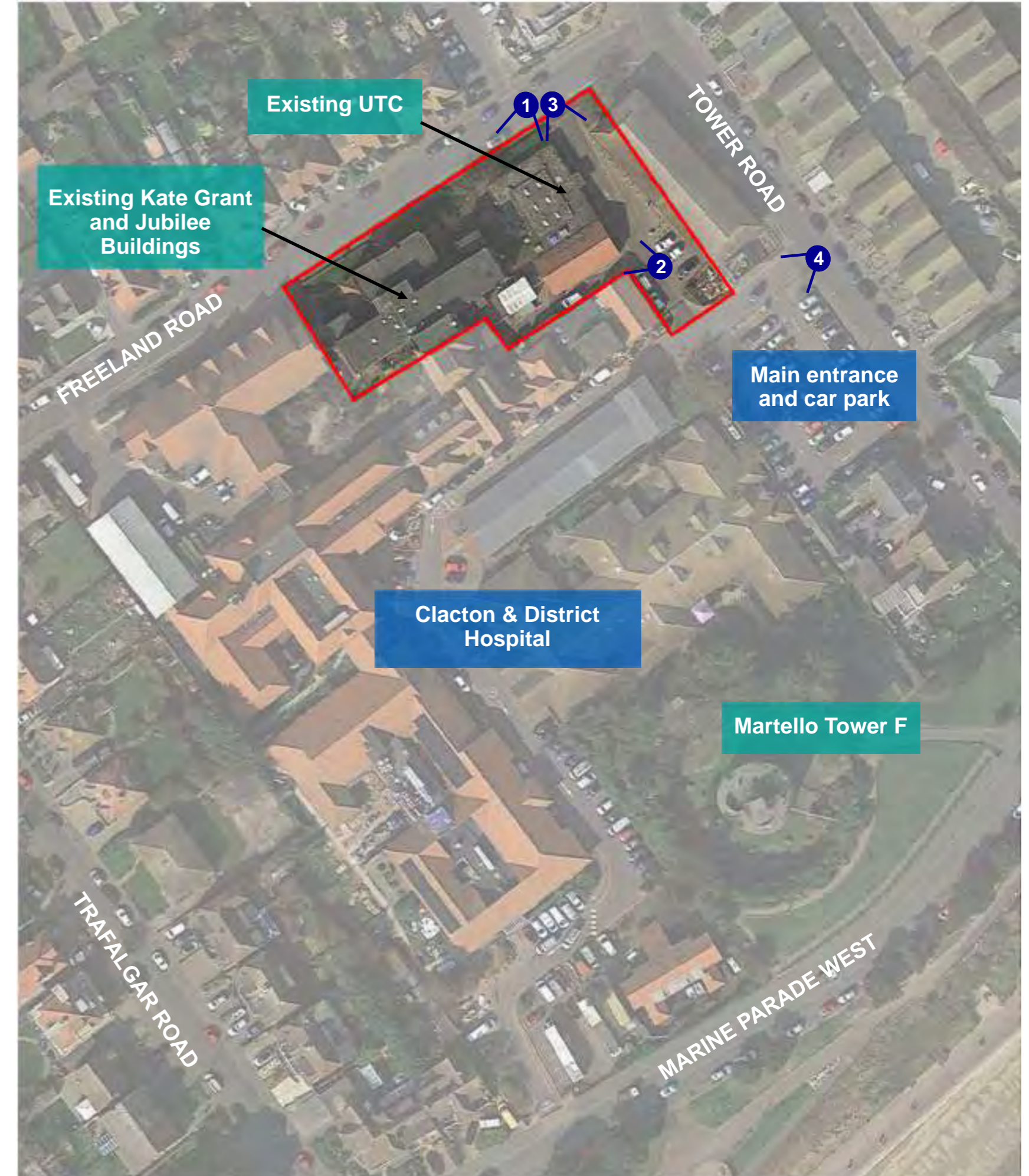


Site context

Proposed new healthcare facilities including an Urgent Treatment Centre



East Suffolk and
North Essex
NHS Foundation Trust



Working in collaboration with:



The proposed development

Proposed new healthcare facilities including an Urgent Treatment Centre



East Suffolk and
North Essex
NHS Foundation Trust



New plans to offer quicker and more local access to healthcare.

Cleaner, greener future

The new facility will provide a better patient experience in terms of both physical access to healthcare and an improved clinical environment in a more convenient location.

The space will enable local people to remain closer to home, reducing travel costs and associated emissions and pollution.

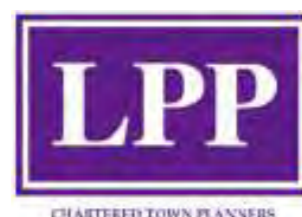
What will be provided:

The new healthcare facilities will include an **Urgent Treatment Centre** that will operate between 8am to 8pm, every day, and have:

- 9 consulting/examination rooms
- Dedicated isolation room
- 3 triage rooms
- Eye and plaster rooms
- Dedicated mental health consulting room.



Working in collaboration with:



Pre-application engagement

Proposed new healthcare facilities including an Urgent Treatment Centre



East Suffolk and
North Essex
NHS Foundation Trust



Pre-application engagement has taken place with Tendring District Council and Essex County Council Highway Authority.

The main feedback received was:

- The principle of the development is considered acceptable.
- The proposed location for the new healthcare facility, including UTC, is considered appropriate.
- The scale and flat roofed design of the proposed building, with roof top mechanical equipment is considered suitable.
- The proposal would result in heritage benefits through the reinstatement of the original Art Deco entrance to the Jubilee building which is currently closed.
- Compensatory tree planting will be required as part of the proposed landscaping scheme.
- A detailed noise assessment including mechanical equipment details will be required to support the planning application.
- A Travel Plan will be required in connection with the development proposals.
- The proposed layby off Freeland Road is considered acceptable.

Further work following the pre-application engagement process has resulted in the scheme proposals shown within this public exhibition which are 'work in progress'

Working in collaboration with:



Castons



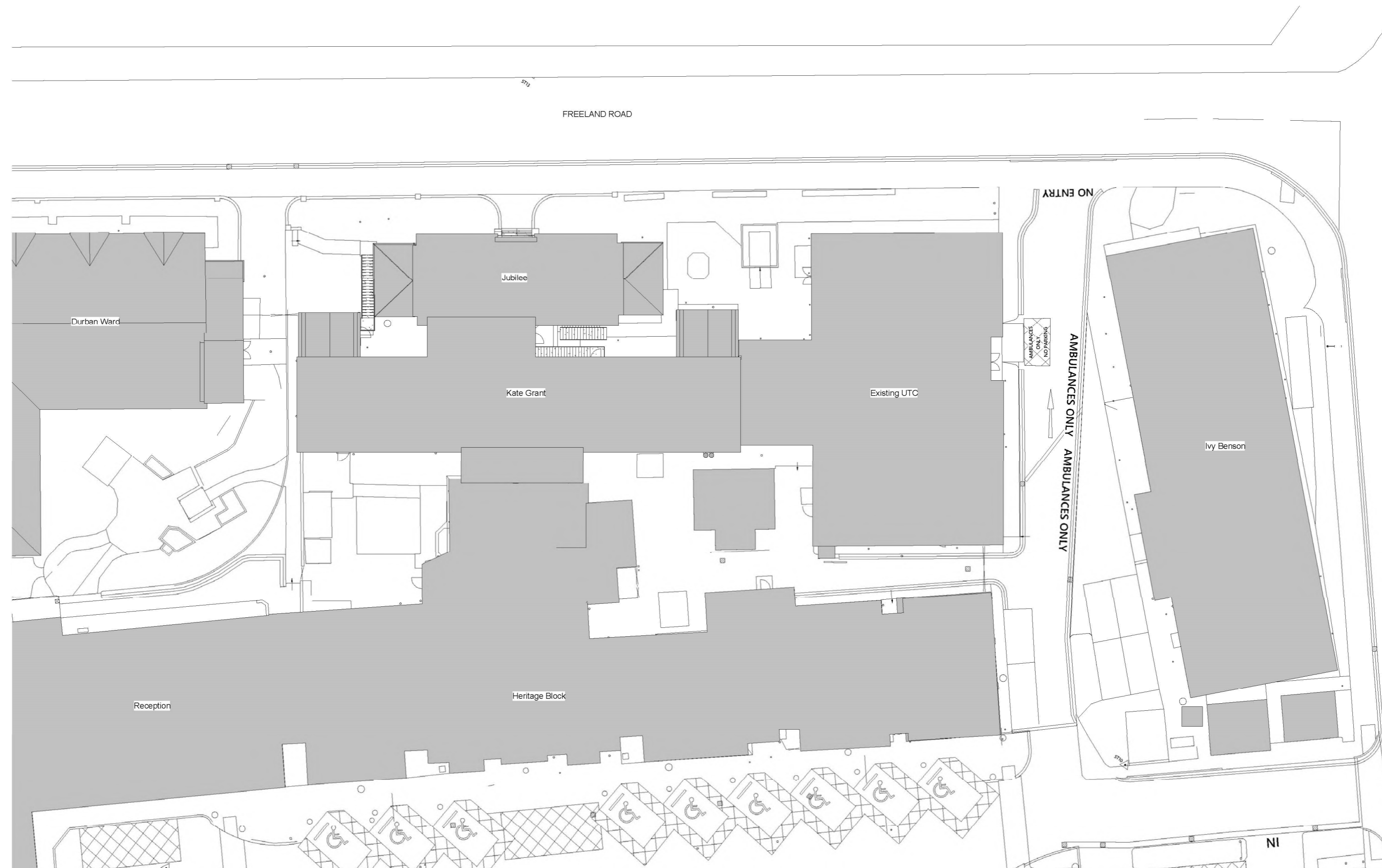
The proposed development

Proposed new healthcare facilities including an Urgent Treatment Centre

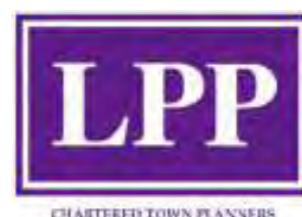


East Suffolk and
North Essex
NHS Foundation Trust

Existing
Block Plan



Working in collaboration with:



The proposed development

Proposed new healthcare facilities including an Urgent Treatment Centre

Proposed Block Plan

- Existing Road
- Existing Roofs
- Proposed Roofs
- Existing Footpaths
- New Footpaths
- New Road
- Proposed Shared Surface
- Existing Green Areas
- Proposed Green Areas
- New Proposed Trees / Planting



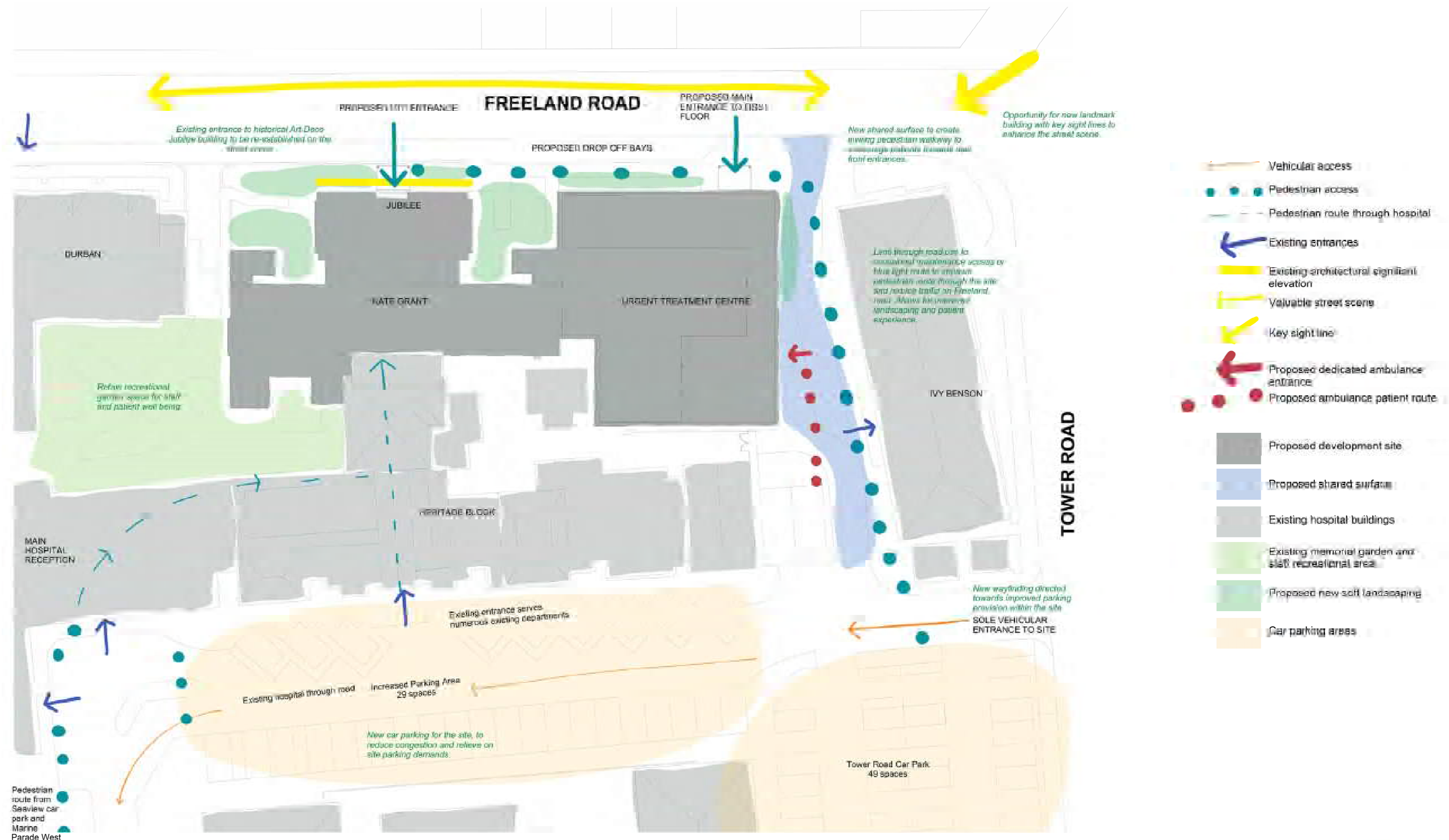
Working in collaboration with:



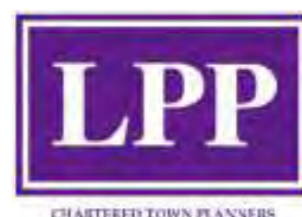
The proposed development

Proposed new healthcare facilities including an Urgent Treatment Centre

Proposed Block
Plan with
alterations and
improvements
included



Working in collaboration with:



The proposed development

Proposed new healthcare facilities including an Urgent Treatment Centre



East Suffolk and
North Essex
NHS Foundation Trust

Freeland
Road
Elevation



Freeland Road Elevation

Working in collaboration with:



The proposed development

Proposed new healthcare facilities including an Urgent Treatment Centre



East Suffolk and
North Essex
NHS Foundation Trust

The development proposals for the scheme are as follows:

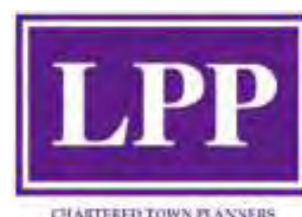
- Demolition of existing urgent treatment centre.
- Erection of two storey modular building to provide new healthcare facilities including an urgent treatment centre comprising approximately 1,450sqm floorspace.
- Provision of roof top mechanical equipment room comprising approximately 280sqm that will be set back from Freeland Road.
- Reinstatement of front entrance to the existing Jubilee building.
- Provision of a ground and first floor link walkway from the new building into the existing buildings to be refurbished.
- Provision of drop off layby onto Freeland Road; alterations to internal access road and provision of ambulance parking bays.
- Provision of supplementary landscaping.



The existing Jubilee and Kate Grant buildings will also be subject to internal refurbishment to provide new healthcare facilities including staff areas.

Existing services within these buildings comprising the Lower Leg Unit, assessment area for urgent treatment and Infusion Lounge will be relocated to other areas within the hospital site.

Working in collaboration with:



Castons



The proposed development - key benefits

Proposed new healthcare facilities including an Urgent Treatment Centre



East Suffolk and
North Essex
NHS Foundation Trust

Some of the key benefits associated with the development include:

Effective co-location of key services including recently constructed Community Diagnostic Centre.

Improvements to Jubilee and Kate Grant buildings.

Improved patient and staff experience.

Qualitative improvements to deliver increased operational and clinical efficiencies.

Situated within an optimum location, creating a focal point for the site.

Contribution to NHS net zero ambitions for carbon emissions and air pollution.

Improvements to pedestrian access within the site.

Enables equitable access to healthcare services to reduce health inequalities.

Improvements to urgent treatment care for Clacton and surrounding areas.

Improvements to general healthcare provision for Clacton and surrounding areas.

Development integration with the existing hospital campus.

Working in collaboration with:



Castons





KLH Architects: Design proposals and materials



The location for the development has been carefully considered by the Trust in collaboration with NHS Property Services, having regard to the strategic vision for the estate.

The proposed healthcare facilities are considered to be in the optimum position due to related clinical adjacencies, opportunities to improve pathways and direct access to urgent treatment for the local population.

The proposed building sits within a prominent location and therefore should become a focal point to welcome people to the Hospital. The plans shown are 'work in progress'.

It uses a contemporary design approach, sympathetic to its context and surrounding buildings:

- Red brick
- Relief patterns using projecting headers
- Panel glazing

Proposed Glazing



Thermally Broken Metal Windows



Art Deco References

Proposed Brick Detailing



Projecting Headers



Horizontal Glazing and Brick Patterns

Existing Context Details



Crossing Tiles



Brick Paneling

The design approach was amended to reflect pre-application comments from Tendring District



Transport and parking

Proposed new healthcare facilities including an Urgent Treatment Centre

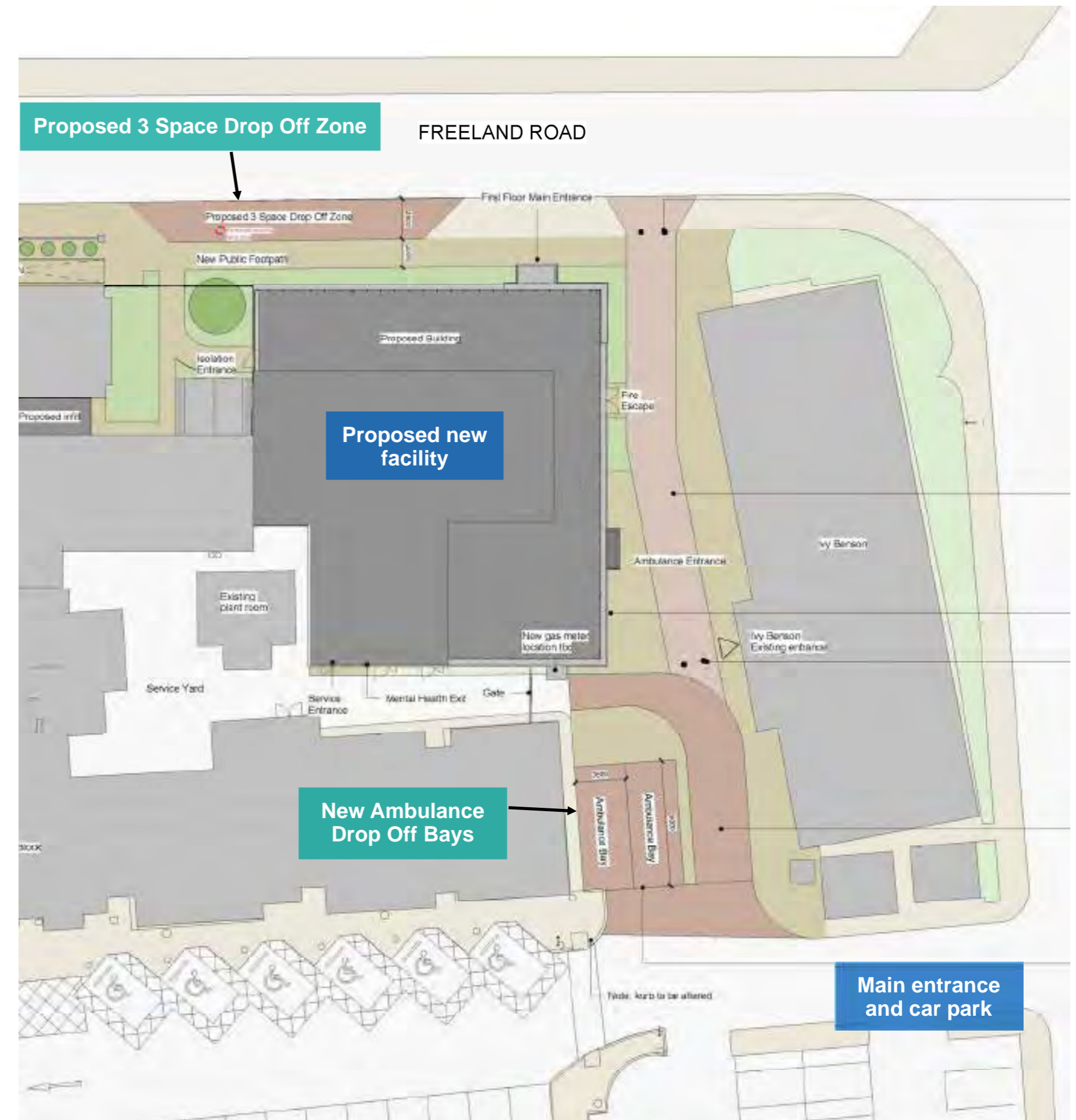


The proposed scheme will deliver a drop off layby and ambulance parking.

The proposed development will not result in the loss of any staff or patient parking on site.

Planning permission was recently granted for an additional 34 car parking spaces including disabled provision and 30 cycle parking spaces.

Pre-application advice from Essex County Council Highways support the proposed development.



A Transport Statement and Travel Plan will be provided to support the development proposals.

The Travel Plan will contain a number of initiatives to promote sustainable travel modes and various associated initiatives to encourage the use of sustainable transport modes by patients, visitors and staff.



Biodiversity, trees and landscaping

Proposed new healthcare facilities including an Urgent Treatment Centre



New soft landscaping will be provided to enhance the site.

A small number of trees along Freeland Road will be removed to facilitate the development.

Any loss of existing vegetation will be minimised, with replacement planting provided where appropriate.



Viewpoint A: View of development site from Freeland Road.



Viewpoint B: View of existing soft landscaping adjacent to development site.



Viewpoint C: View of existing soft landscaping along Freeland Road.

The scheme layout has been informed by ecological and tree surveys.

A soft landscaping scheme will be included to enhance the quality of this part of the hospital site.

Working in collaboration with:



Residential amenity

Proposed new healthcare facilities including an Urgent Treatment Centre



East Suffolk and
North Essex
NHS Foundation Trust



The location for the proposed new facility has been carefully considered by the Trust following a site appraisal process.

Careful consideration has been given to the amenities of local residents, with the siting of the proposed building positioned along the same alignment as the existing buildings along Freeland Road.

The proposed location of roof top mechanical equipment will be set back from the front elevation of the new building.

The current UTC operates from 8am to 8pm, 7 days a week, and these opening hours will continue as part of the new UTC.

Any rooftop or associated mechanical equipment would be attenuated, and a noise assessment will be provided to support the planning application.



View looking north-west along Freeland Road.

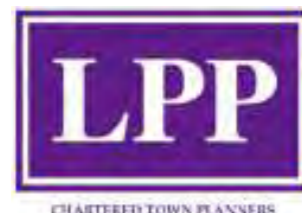


View looking north-east along Freeland Road



View looking south along Tower Road

Working in collaboration with:



Castons



Timescales and next steps

Proposed new healthcare facilities including an Urgent Treatment Centre



East Suffolk and
North Essex
NHS Foundation Trust

A planning application will be submitted for the development covered by this planning application public consultation.

Next steps:



Review and consideration of public consultation comments and include updates to scheme proposals.

The planning application will be submitted to Tendring District Council in **February 2024**.

Subject to securing full planning permission, the proposed development is likely to be undertaken in phases with construction due to commence in **late Spring/early Summer 2024**.

It is estimated that the first phase of the project including the UTC will be completed and operational in **late Spring/early Summer 2025**.



Working in collaboration with:



Castons



Planning application public consultation: We welcome your views

Proposed new healthcare facilities including an Urgent Treatment Centre

Thank you for viewing our planning application public consultation.

Your views are important to help us develop the proposal, and we welcome your comments on the scheme.

You can also give your feedback online.

Our online
consultation will
be open from
18 January to
1 February 2024.

Link to online
comments form:

[Click here](#)

The consultation boards will be available to view online at www.lpppartnership.co.uk or www.esneft.nhs.uk.

You can provide your views on the scheme proposals in the following ways:

Online form: (<https://www.surveymonkey.com/r/JPQ56LS>)

Telephone: 01206 835150

Email: consultation@lpppartnership.co.uk

Post: Lawson Planning Partnership, 884 The Crescent,
Colchester, Essex, CO4 9YQ

Working in collaboration with:



Castons



With thanks to the creators on The Noun Project for use of their icons.

