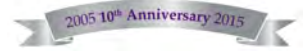


Headlines

- Planning Permission Granted for Residential Redevelopment at Old Catton, Norwich
- Waste Local Plan Allocation Secured for Inert Landfill at Fingringhoe, Colchester
- Local Plan Allocation Secured for Extension to Business Park in Norwich



Planning Permission Granted for Residential Redevelopment at Old Catton



*With thanks to CAM Architects

Aerial View looking at Plots 4 - 7

For OMC Investments Ltd, LPP has secured full planning permission and Conservation Area Consent for 7 dwellings to replace redundant former institutional land and buildings within the village of Old Catton, Norwich.



Site Plan as Proposed

*With thanks to CAM Architects

Proposed Site Plan

The site is located within a Conservation Area and adjacent to a listed building and separately listed parkland. The scheme provides the opportunity to regenerate the site while enhancing the village Conservation Area by introducing a high quality contemporary development to the local street scene. LPP engaged in pre-application discussions with the planning authority and negotiated the terms of the S106 Agreement resulting in a commercially favourable development.



Abbey Farm Commercial Park Masterplan

Waste Local Plan Allocation Secured for Inert Landfill at Fingringhoe, Colchester

For JJ Prior Ltd, LPP has secured a strategic (13ha) site allocation for 720,000 tonnes of inert landfill in the Essex CC & Southend-on-Sea Replacement Waste Local Plan Pre Submission Draft, with fill to be imported by barge utilising JJ Prior's existing wharf facilities on the River Colne. LPP coordinated the planning and public consultation strategies and is currently working with the waste officers at Essex CC to progress the allocation through the Public Examination Stage this summer, with Plan Adoption expected in December 2016.



*With thanks to Wynne Williams Associates

Proposed Restoration Plan

The site's Waste Plan recognition now provides the planning comfort necessary to support a future planning application and environmental permitting processes, which will enable the existing quarry voids to be restored in a more commercially effective manner whilst delivering landscape, ecology and public access benefits.

Local Plan Allocation for Extension to Business Park in Norwich

A major 2.9ha expansion to Abbey Farm Commercial Park, Horsham St Faith, Norwich has been secured as an employment land allocation within the new Broadland District Local Plan, due for adoption in May 2016. On behalf of the site owners Horsham Properties Ltd, LPP promoted the site through the Local Plan process and successfully negotiated away objections from the LPA, City Council and statutory consultees. The planning strategy has also involved securing planning permission for related buildings and infrastructure including structural landscaping.



Entrance to Business Park

Headlines

- Reserved Matters Application Submitted for Major Expansion of an Existing Industrial Works at Selby
- Further Scheme Updates
- Colchester Business Park Santa Run 2015
- LPP Welcomes Jenny Moor

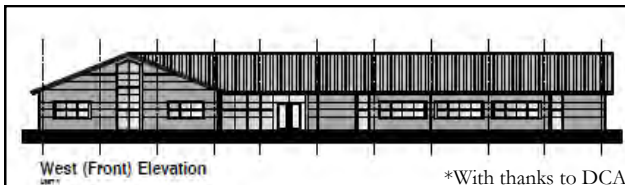


CHARTERED TOWN PLANNERS

2005 10th Anniversary 2015

Reserved Matters Application Submitted for Major Expansion of an Existing Industrial Works at Selby

LPP has recently submitted a Reserved Matters application and separate discharge of conditions application on behalf of Industrial Chemicals Group Ltd relating to the expansion of an existing industrial chemical works for business, general industrial and warehousing development at Selby.



West (Front) Elevation

*With thanks to DCA

Proposed Elevation

The application site covers an area of 7.4 hectares and proposes a mix of B1, B2 and B8 accommodation comprising over 14,000sqm of floorspace in total, together with new internal road infrastructure, vehicular parking and servicing facilities and landscaping (including amenity and ecological habitat areas).



*With thanks to LSDP

Landscape Masterplan

Further Scheme Updates:

- Pre-commencement conditions discharged for Green Belt Equestrian Centre in Havering.
- LPP successfully project managed the material operation of two storage buildings at ICL works, Selby in order to commence both developments and keep the planning permissions alive in perpetuity.
- Pre commencement conditions discharged for chemical storage buildings at West Thurrock, permitting unattenuated surface water discharge into the River Thames (via existing interceptor) securing major infrastructure cost savings to the operator.

Colchester Business Park Santa Run 2015

LPP staff completed the Colchester Business Park Santa Run on Friday 4th December 2015 in aid of East Anglia's Children's Hospices. Thanks to your generous donations, we raised a total of £425 for this worthwhile cause and enjoyed a lovely run (walk for some of us!) in the December sunshine.



Santa Run Team Photo

LPP Welcomes:

Jenny Moor, Senior Planner

Jenny Moor has recently joined LPP as a Senior Planner from Pegasus Group in Cambridge. Jenny is a chartered town planner with over 5 years combined local authority and consultancy experience. Jenny has experience of working within project teams on a variety of applications and appeals for residential, mixed-use and commercial schemes. Other experience includes promotion of sites through the planning process, policy representations and the preparation and co-ordination of Environmental Impact Assessments.

