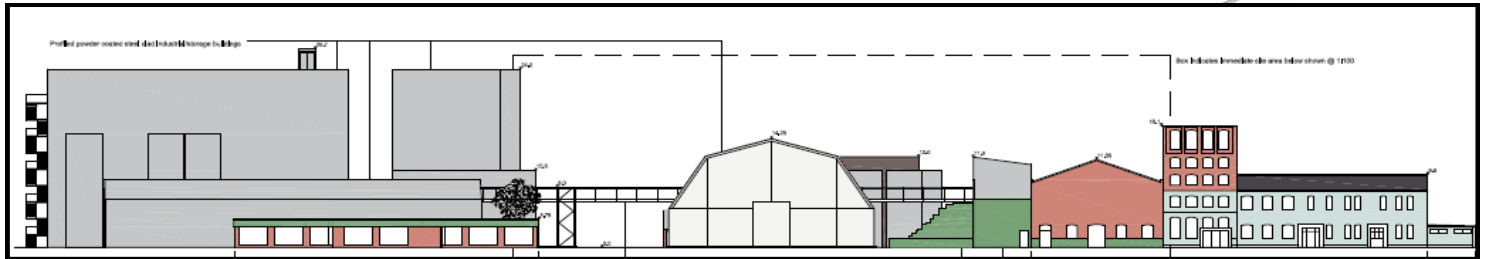
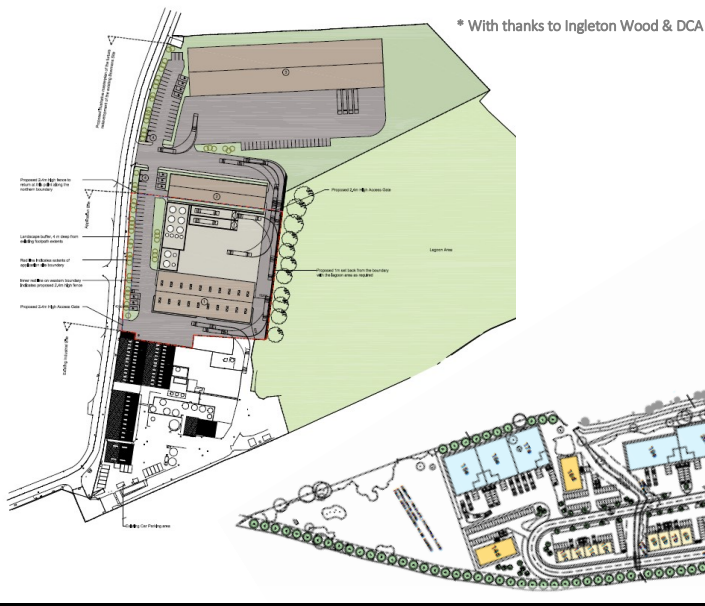


Industrial Chemical Sites at Selby, Newcastle & Widnes

LPP

CHARTERED TOWN PLANNERS



Instruction

Planning strategy advice in support of the company's operational development investment programme and estate strategy review

Client

Industrial Chemicals Group Ltd

Project Details

To assist with ICL's investment programme and estate review, LPP are appointed to advise on and promote the development interests of the firm through the planning process. This involves development Plan representations and planning applications for major industrial, commercial and residential development on sites across the country including southern Essex, Yorkshire, Greater Manchester and Tyneside.

LPP's Role

- Providing planning strategy and feasibility advice aimed at optimising and safeguarding development potential
- Carrying out masterplanning and planning feasibility work for providing new industrial and commercial floorspace at sites where the business is seeking to expand operations
- Promoting the redevelopment of surplus land for alternative uses through the Local Plan process
- Preparation of planning applications and securing planning permission for new commercial and industrial accommodation
- Appointment and co-ordination of specialist consultancy teams
- Project management of planning process and progressing development options over multiple sites
- Liaison and negotiation with Local Planning Authorities

For further information please contact John Lawson
tel 01206 835150 or email johnlawson@lpppartnership.co.uk



RTPI

mediation of space · making of place

www.lpppartnership.co.uk