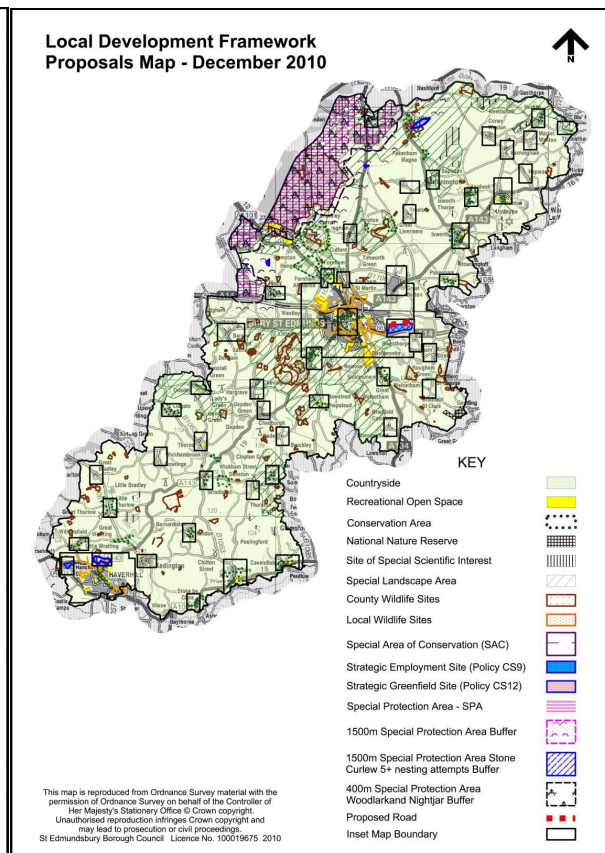
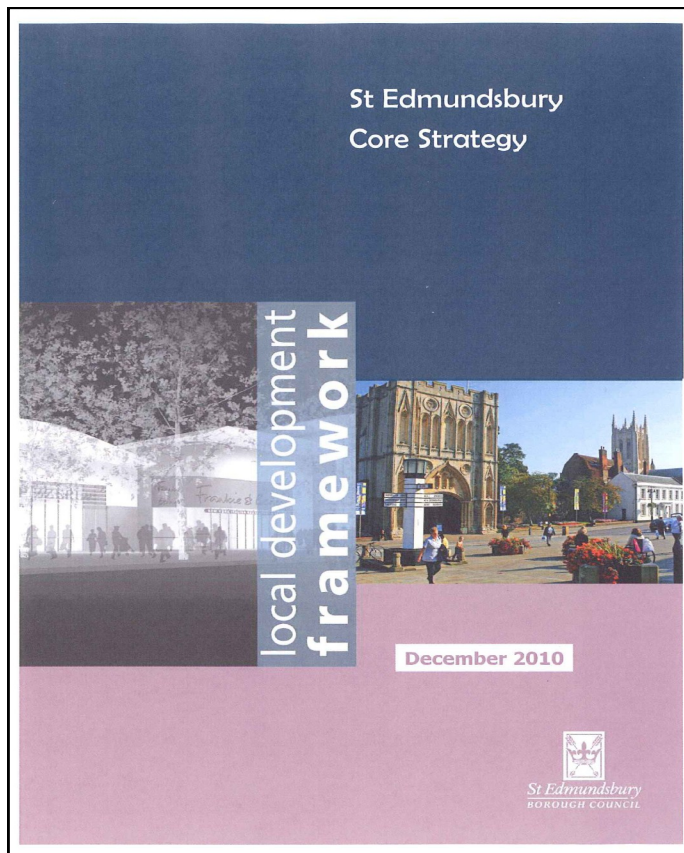


St Edmundsbury Local Development Framework



CHARTERED TOWN PLANNERS



Instruction

Planning policy advice and engagement in the planning process

Client

Suffolk Primary Care Trust

Project Details

Acted as planning advisors to Suffolk Primary Care Trust, engaging in the planning policy formulation processes, securing healthcare infrastructure policy recognition to facilitate appropriate healthcare mitigation funding in association with major residential led development schemes. Statutory planning policy basis for healthcare infrastructure and funding secured in the Core Strategy adopted in 2010.

LPP's Role

- Planning advisor to Primary Care Trust
- Engagement with the Borough Council
- Submission of representations to Development Plan Document consultation processes
- EiP representations and attendance
- Raising the profile of the NHS in the planning process

For further information please contact James Lawson on 01206 835150 or at jameslawson@lppartnership.co.uk

www.lppartnership.co.uk